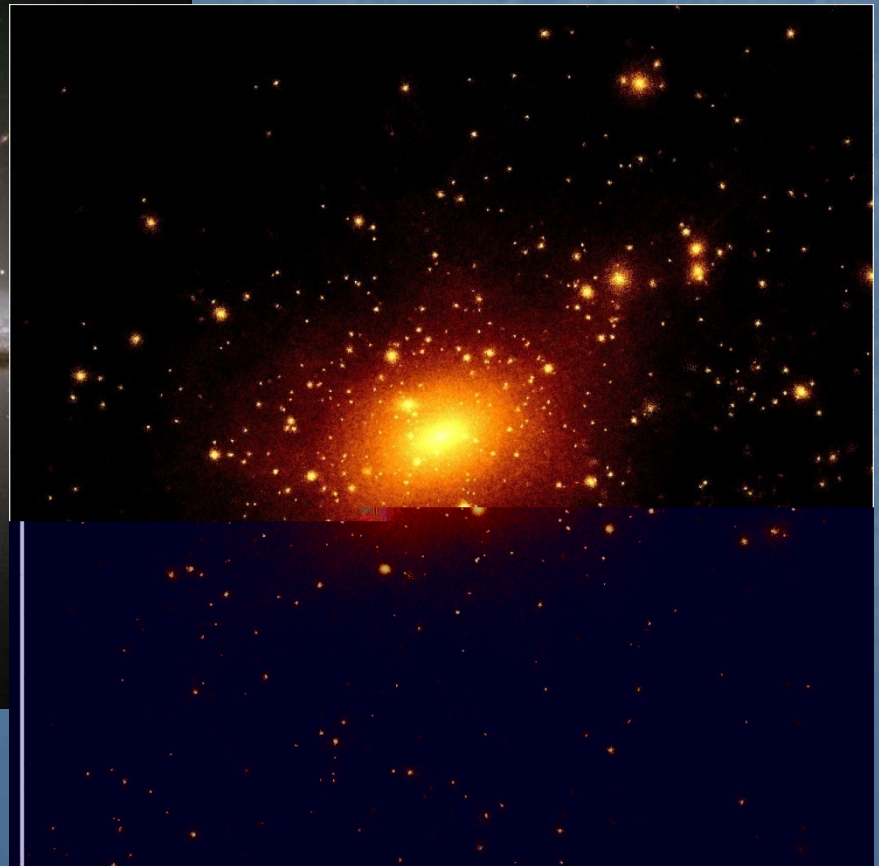
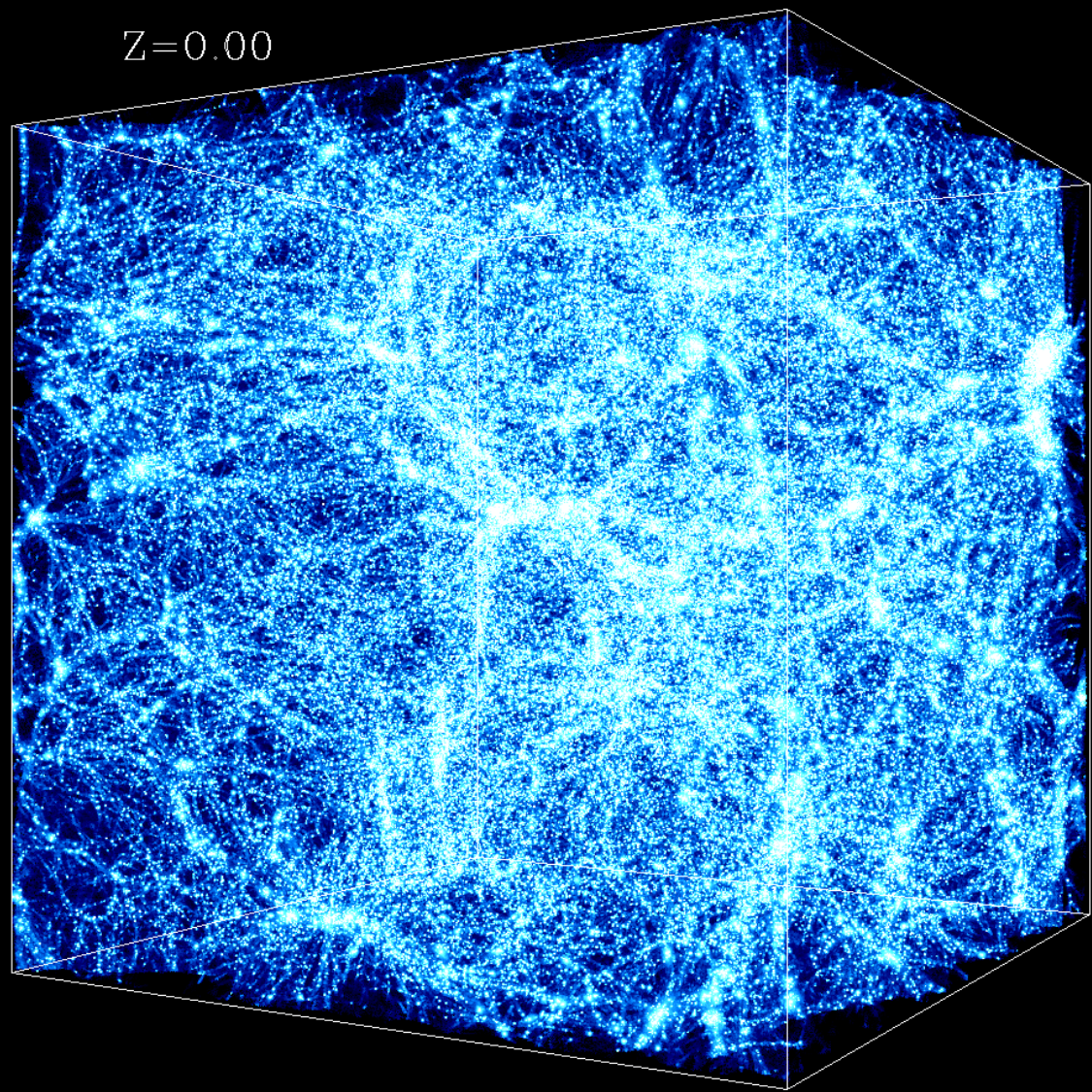


# Realistic Analysis of Cosmological Simulations



# Limited Scale Resolution

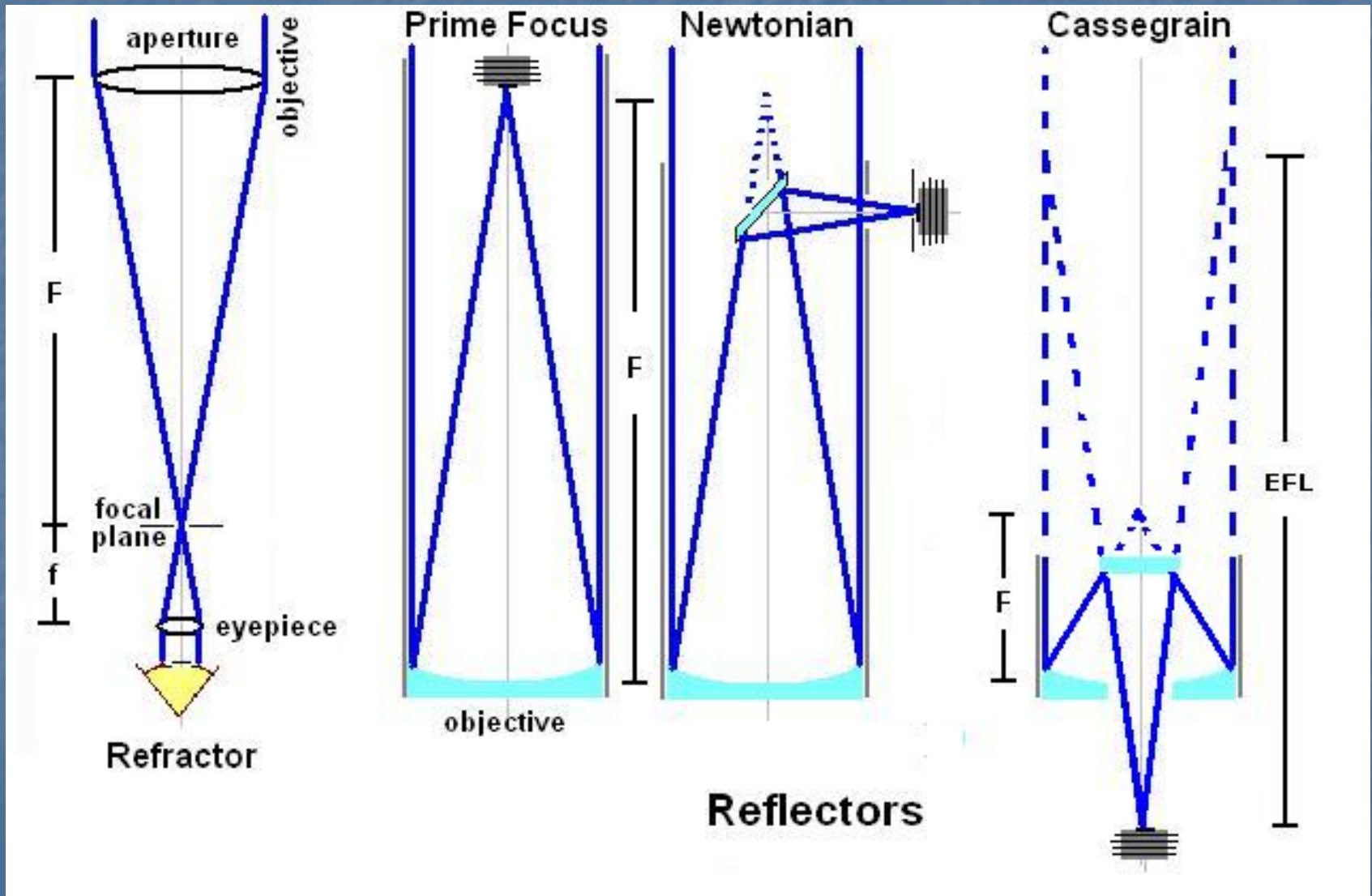
$Z=0.00$

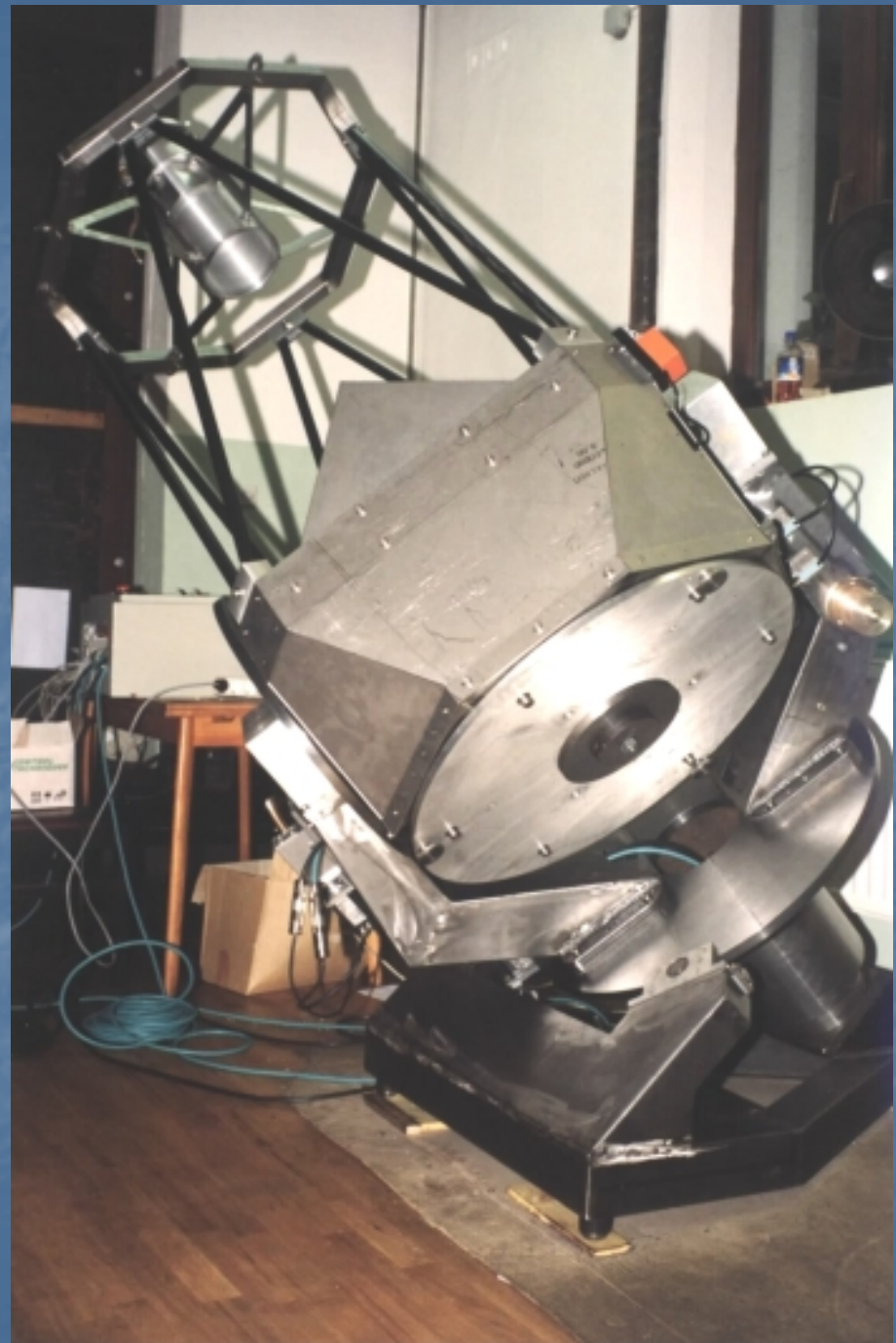
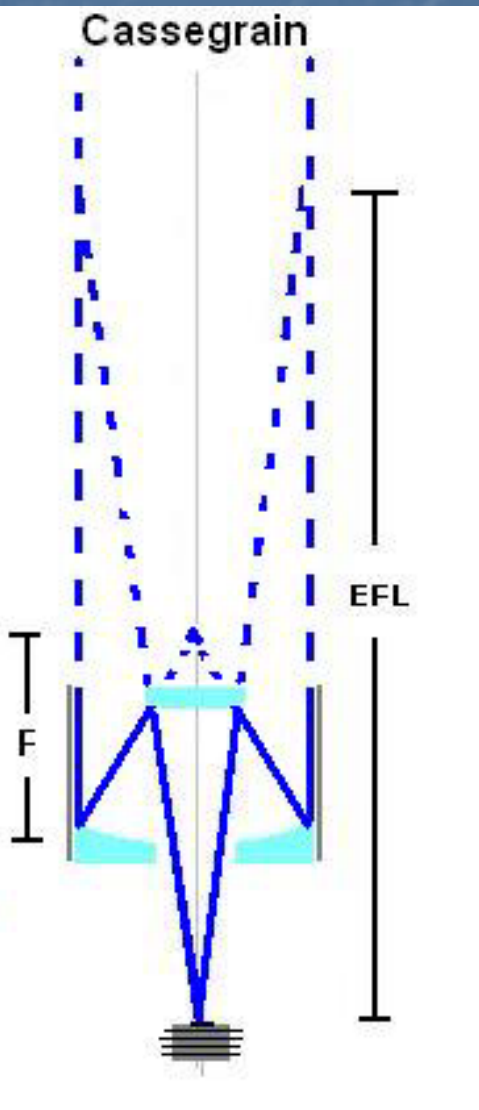


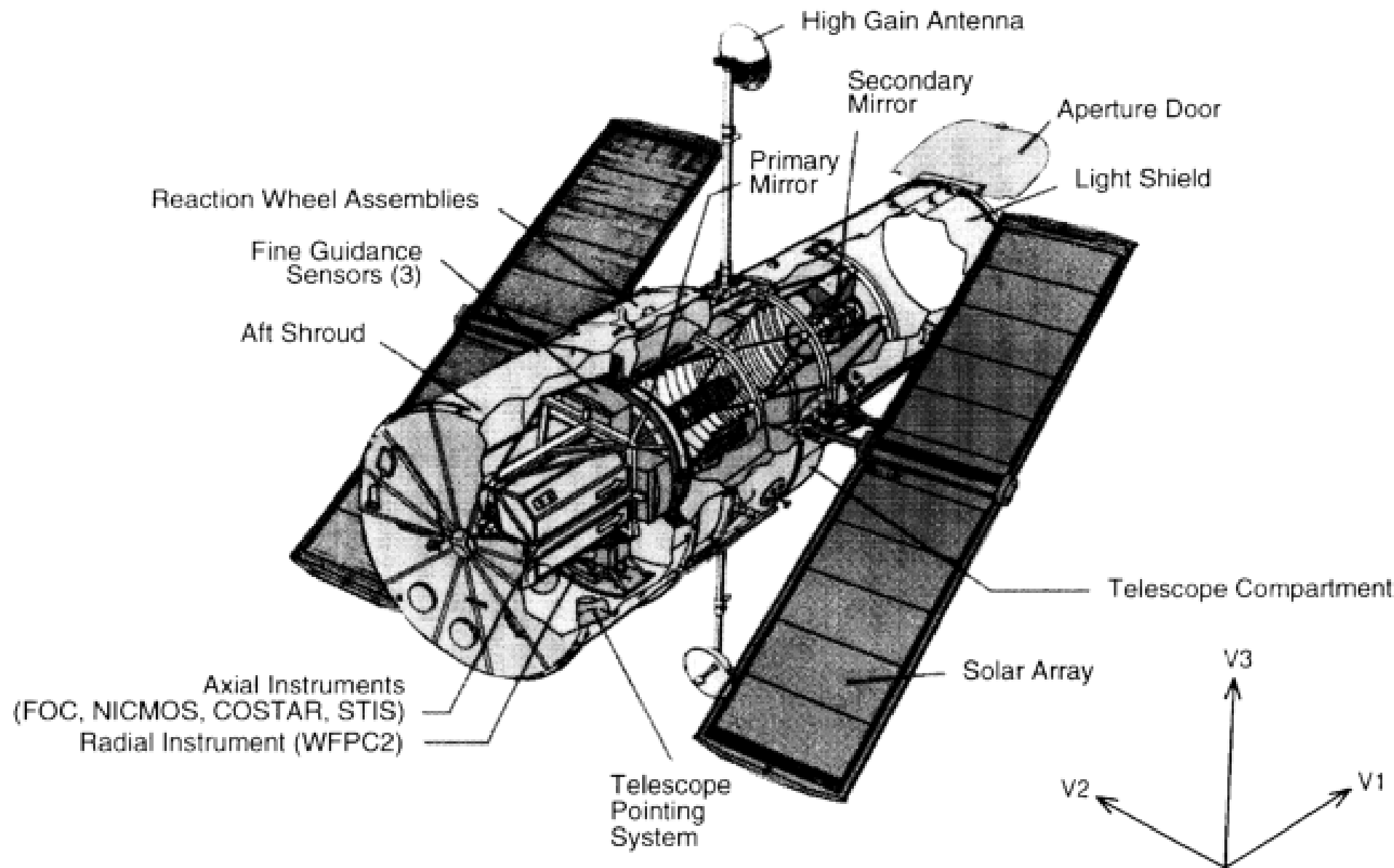
# Collaborators

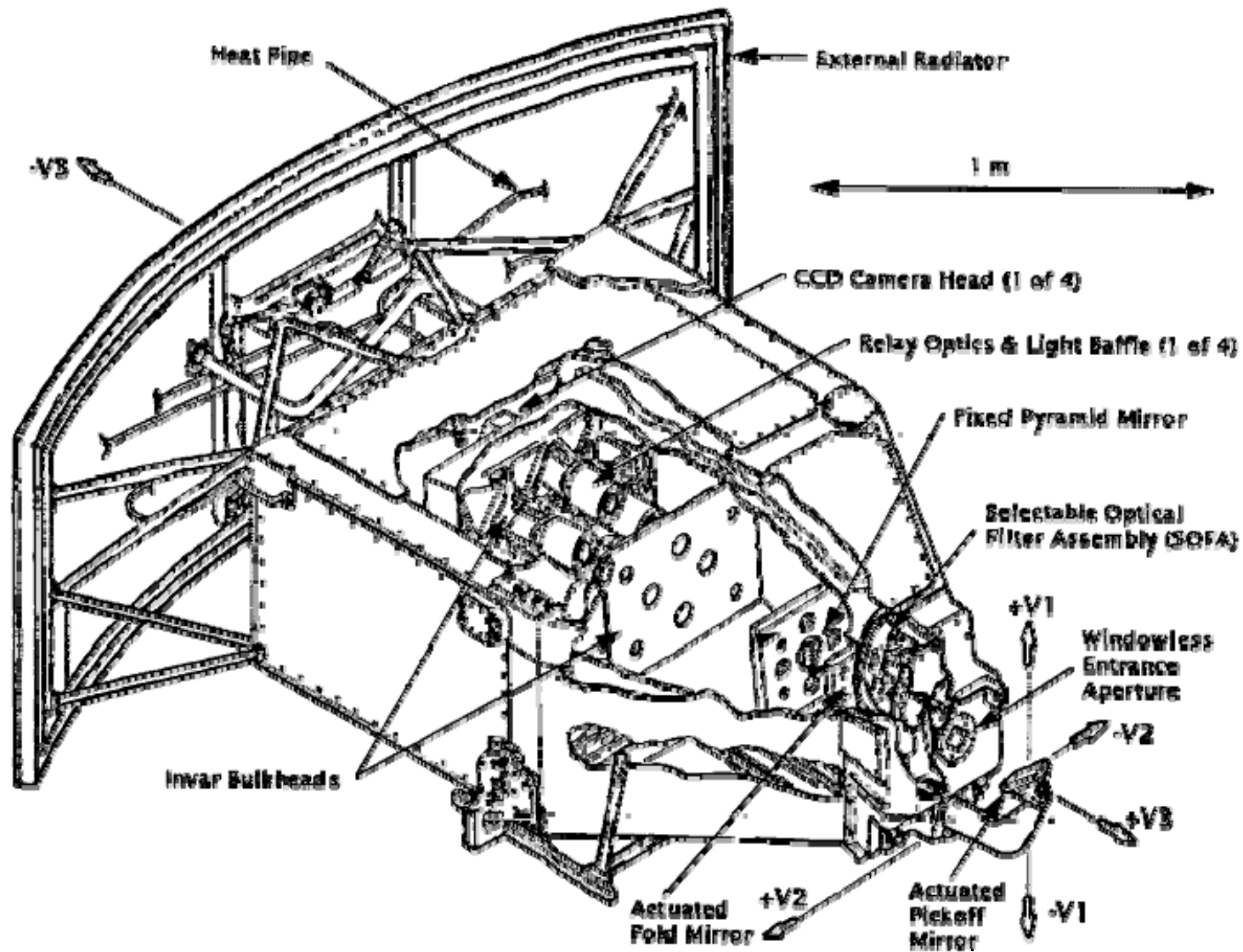
- Fabio Governato
- Chris Brook
- University of Washington, Seattle

# Observing Real Galaxies









# Charge Coupled Devices (CCDs)

## Reading Charges Out of an Array

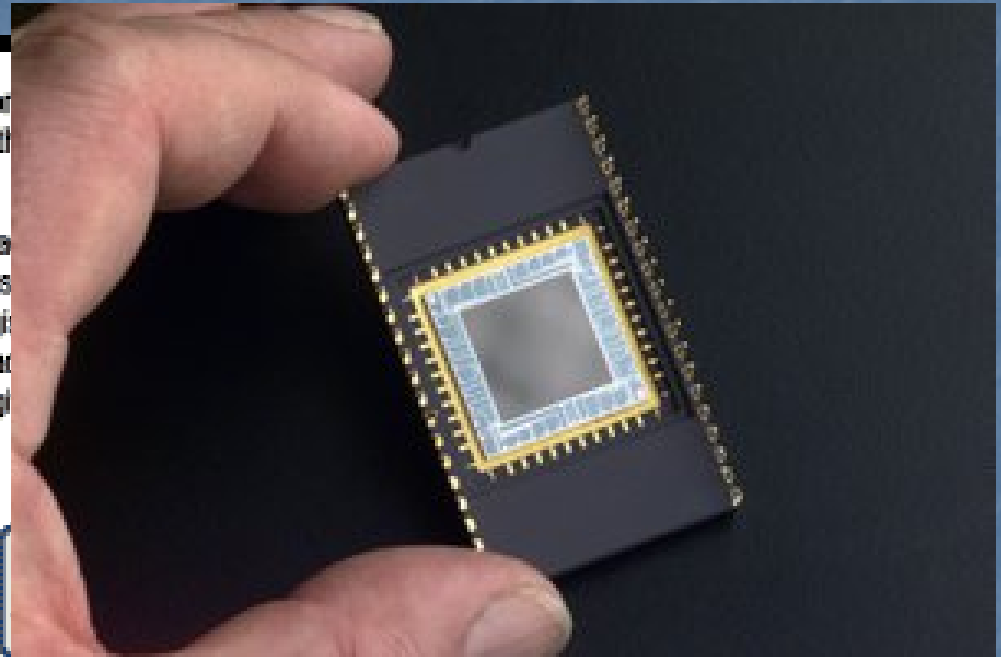
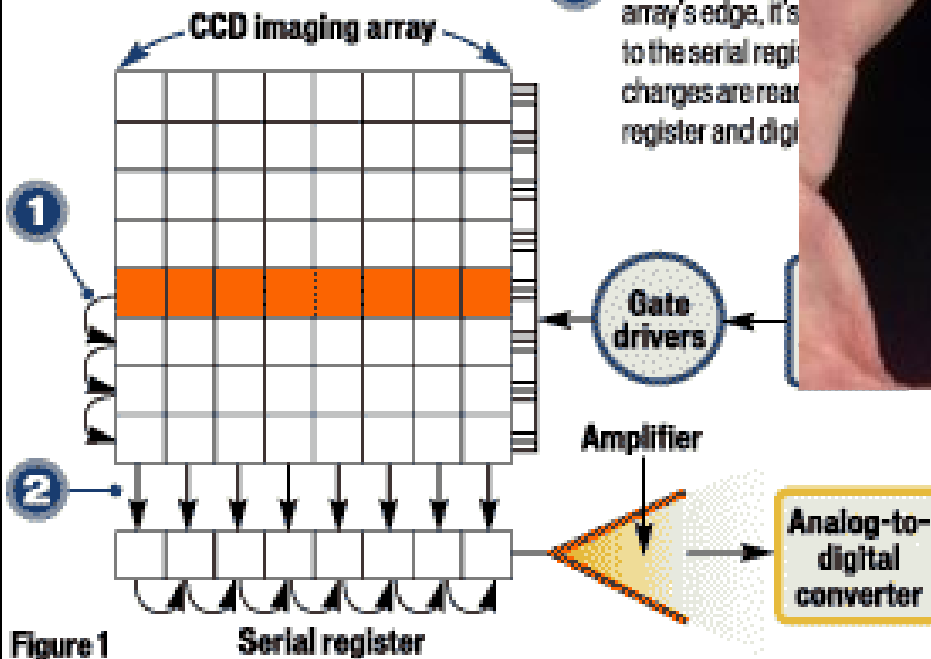
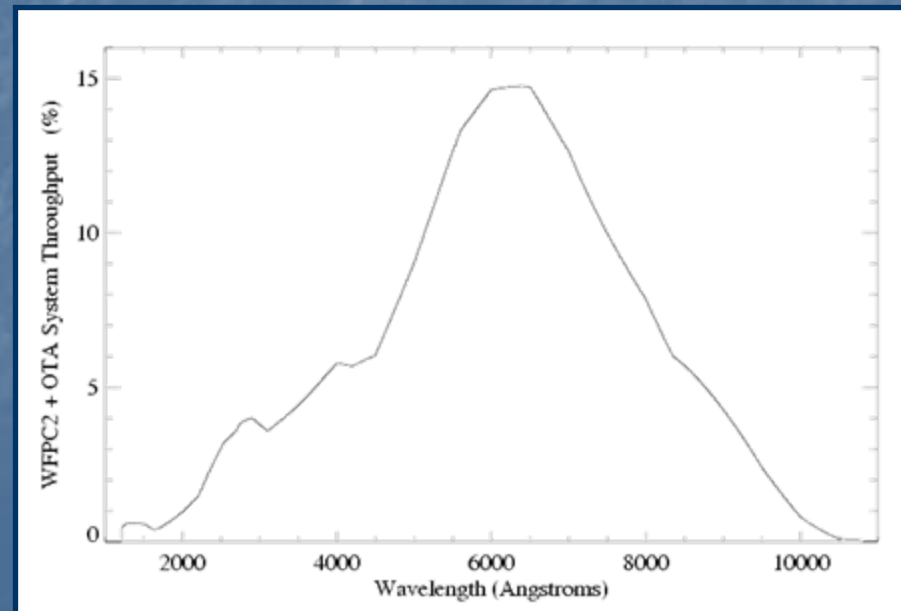
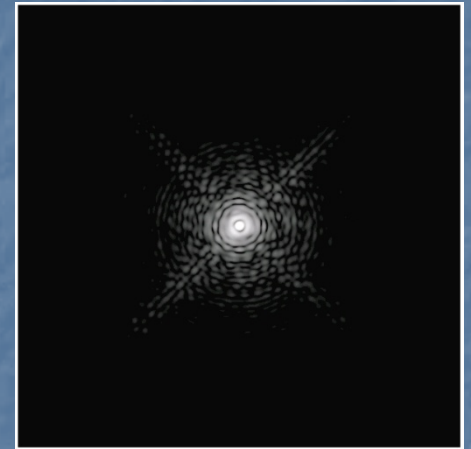


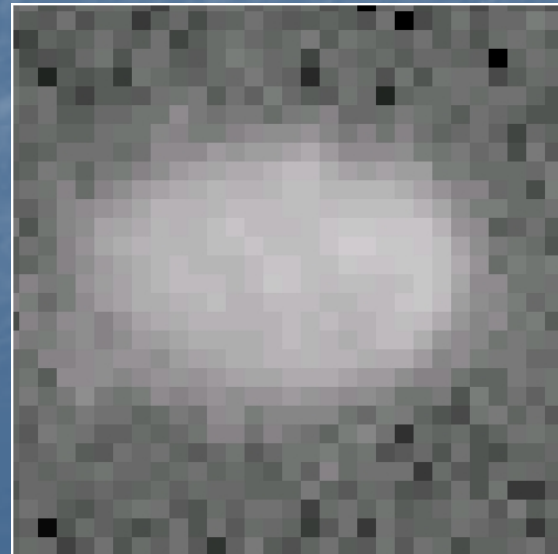
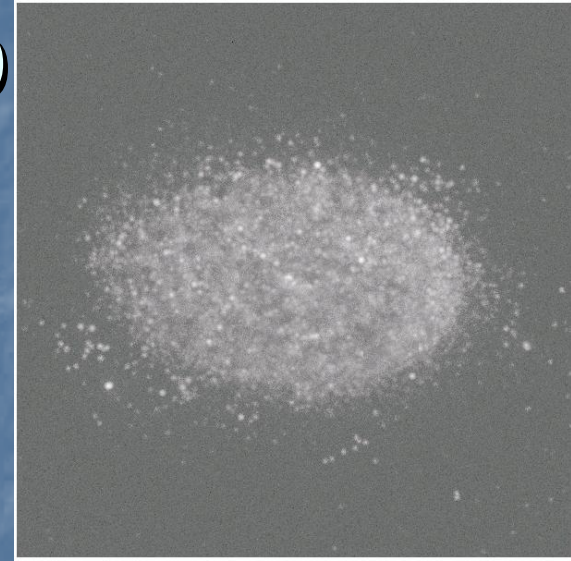
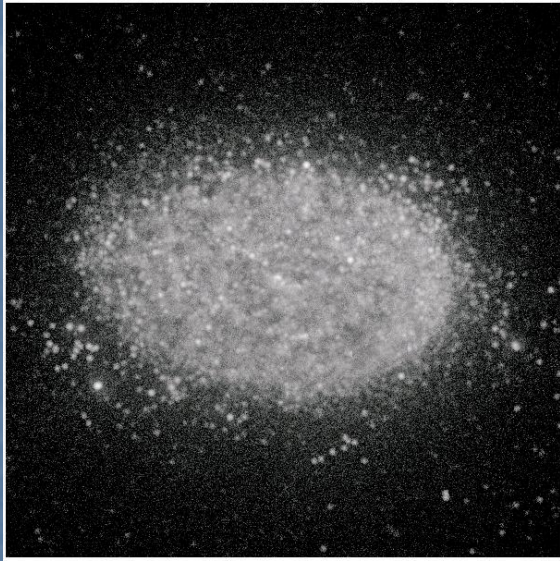
Figure 1

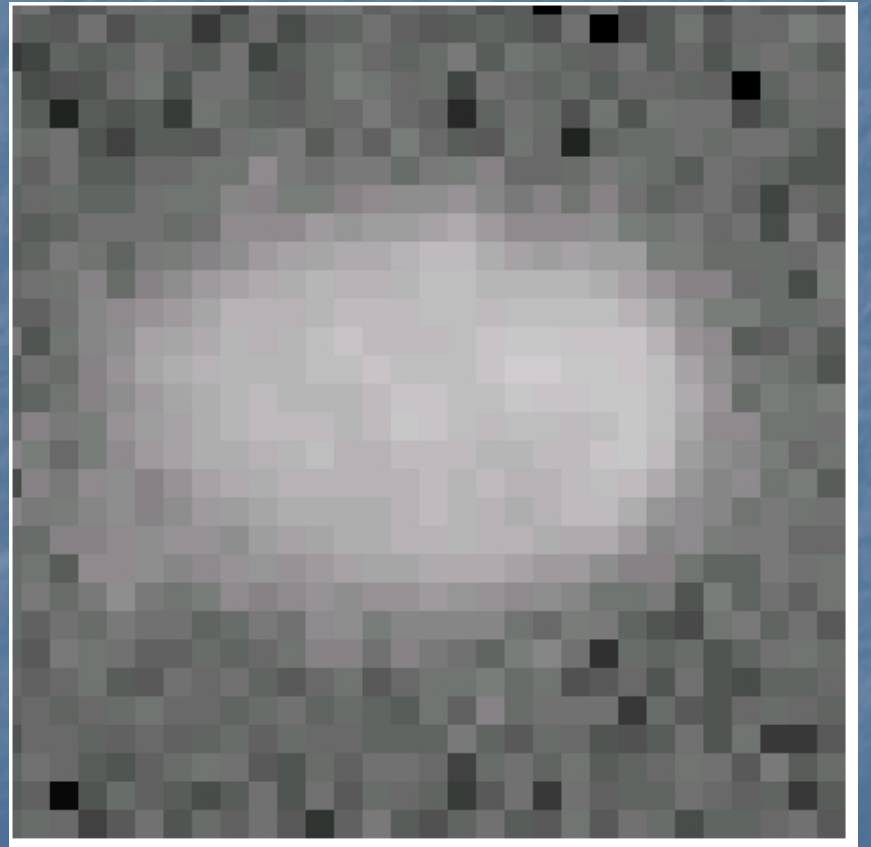
# CCD (and other) Effects

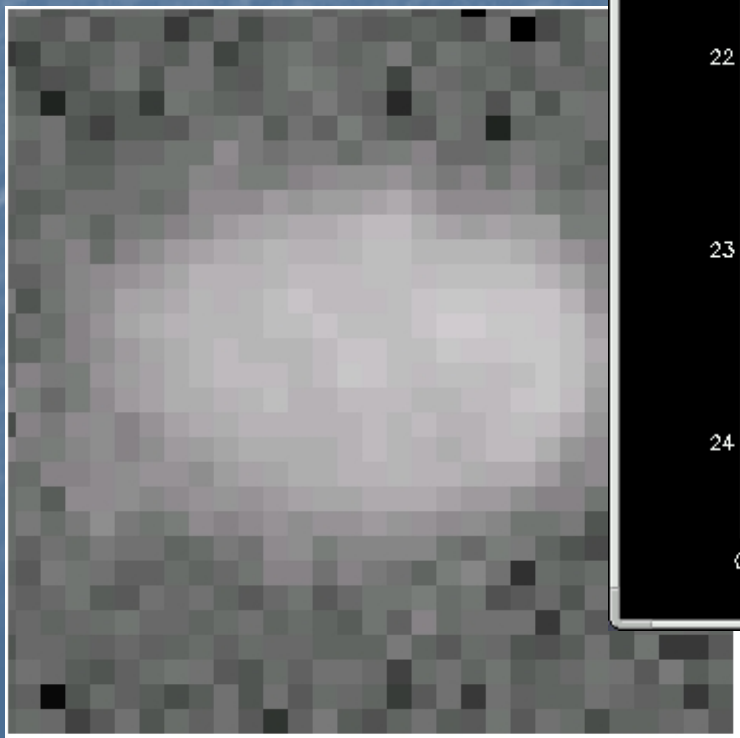
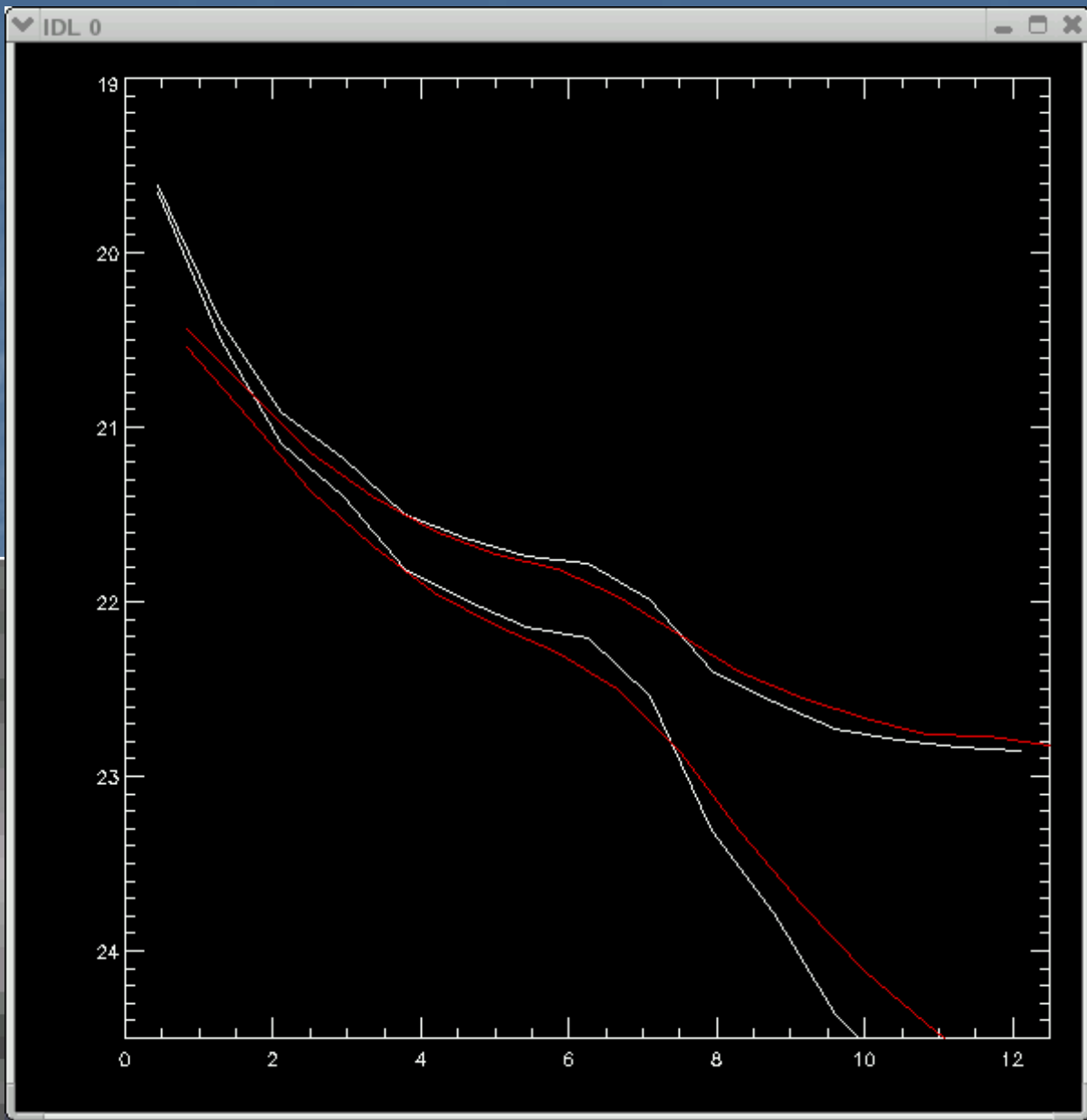
- Dark Current
- Pixel response function
- Read-out Noise
- System Throughput
- Filter Efficiency
- Quantum Efficiency
- Background
- Point-spread func.



# Errors in Real Observations Must be Added into Simulations







# Thank You

I would like to extend my thanks to the New Mexico Space Grant Consortium for their support during this project and to Dr. Nicole Vogt for her invaluable direction and help.

